



Fund Factsheet

# Barrow Hanley Global Share Fund Class A

## Fund at a glance

### Investment objective

The Fund aims to provide investors with long-term capital growth through investment in quality global shares and to outperform the MSCI World Net Total Return Index (AUD) (before fees and taxes) over rolling three-year periods.

### Benchmark

MSCI World Net Total Return (AUD)

### Investment guidelines

Global shares	95–100%
Cash	0–5%
Inception date	August 2014
Distributions	Half-yearly
APIR Code (Class A)	PER0733AU
Management fee (% pa) (Class A)*	0.99%
Number of stocks	50–70
Single Position	≤ 5%
Sector Position	≤ 40%
Maximum allocation per country	≤ 25% (ex U.S.)
Maximum total allocation to securities incorporated in the US	± 50% U.S. Relative to MSCI World
Maximum allocation to emerging markets	≤ 20%
Buy spread#	0.15%
Sell spread#	0.10%

\*For total ongoing annual fees and costs, refer to the product disclosure statement (PDS).

#As at 1 October 2022. Subject to change. Refer to the Fund's PDS for the latest spreads.

### Portfolio managers



**Brad Kinkelaar**  
Senior Managing  
Director, Equity  
Portfolio Manager



**Cory Martin**  
Chief Executive Officer  
/ Executive Director,  
Equity Portfolio Manager



**David Ganucheau**  
Senior Managing  
Director, Equity Portfolio  
Manager / Analyst

## How to invest

Whether you're a first-time investor or an investment professional, you can access our investment expertise in the way that best suits your individual needs:

**Direct investment:** You can invest directly as an investor or adviser with a minimum amount of \$25,000. You can apply online or using our paper application.

**Invest via a platform:** You can invest with us via a platform, which is generally offered through a financial planner. A platform bundles a range of managed funds and investments as one single product to provide consolidated administration, tax, and distribution reporting.

# Barrow Hanley Global Share Fund Class A



## About the Fund

The Barrow Hanley Global Share Fund aims to provide investors with long-term capital growth through investment in quality global shares. It is managed by a team with deep experience in investing through multiple market cycles. The consistent, repeatable investment process identifies companies across the globe and the market capitalisation spectrum to exploit inefficiencies. This results in a well-diversified, active portfolio that seeks to provide asymmetrical returns by participating in up markets while aiming to protect in down markets.



## Fund design

The Barrow Hanley Global Share Fund is designed for investors who are seeking long-term capital growth through investment in quality global shares, have a minimum investment timeframe of seven years or longer and are comfortable with the risks associated with the Fund. The Fund has a risk level of High\*.



## Why invest with Barrow Hanley?

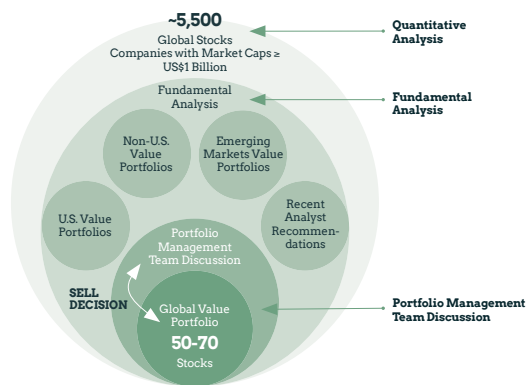
Founded in 1979, Barrow Hanley is a diversified investment management firm and a leader in global value investing. Since the firm's founding, the team has remained true to their repeatable, long-term investment process, refined only by their growing wealth of experience and institutional knowledge. This has resulted in over 40 years of highly competitive investment performance. Today, Barrow Hanley remains a majority-owned indirect subsidiary of Perpetual.



## Investment overview

Barrow Hanley believes markets are inefficient, and that these inefficiencies can best be exploited through adherence to a valuation centric investment process dedicated to the selection of securities on a bottom-up basis. The team focuses primarily on fundamental securities analysis, valuation, and prospects for a return to fair valuation.

## Investment process



## What are the risks?

All investments carry risk (such as market and economic risk and asset risk) and different strategies may carry different levels of risk. The investment strategy risk for the Fund includes emerging market risk. The product disclosure statement for the Fund provides a description of this risk as well as outlines other significant risks that may affect your investment and should be considered before deciding whether to acquire or hold units in the Fund. Your financial adviser can assist you in determining whether a fund is suited to your financial needs.

\* As represented by the Standard Risk Measure (SRM). The SRM is based on industry guidance and is not a complete assessment of all forms of investment risk.

This information has been prepared by Perpetual Investment Management Limited (PIML) ABN 18 000 866 535, AFSL 234426. Barrow, Hanley, Mewhinney & Strauss (Barrow Hanley) is 75% owned subsidiary of Perpetual Limited and part of the Perpetual Group. Perpetual Corporate Trust Limited (ABN 99 000 341 533, AFSL 392673) has appointed Barrow Hanley as its authorised representative (Representative number 001283250) under its Australian Financial Services Licence.

It is general information only and is not intended to provide you with financial advice or take into account your objectives, financial situation or needs. You should consider, with a financial adviser, whether the information is suitable for your circumstances. To the extent permitted by law, no liability is accepted for any loss or damage as a result of any reliance on this information.

The product disclosure statement (PDS) for the Barrow Hanley Global Share Fund, issued by PIML, should be considered before deciding whether to acquire or hold units in the fund. The PDS and Target Market Determination can be obtained by calling 1800 022 033 or visiting our website [www.perpetual.com.au](http://www.perpetual.com.au).

No company in the Perpetual Group (Perpetual Limited ABN 86 000 431 827 and its subsidiaries) guarantees the performance of any fund or the return of an investor's capital. Past performance is not indicative of future performance. 3265\_0523

## Find out more

Adviser Services: 1800 062 725

Investor Services: 1800 022 033

[investments@perpetual.com.au](mailto:investments@perpetual.com.au)

[perpetual.com.au](http://perpetual.com.au)



BARROW HANLEY  
GLOBAL INVESTORS™

